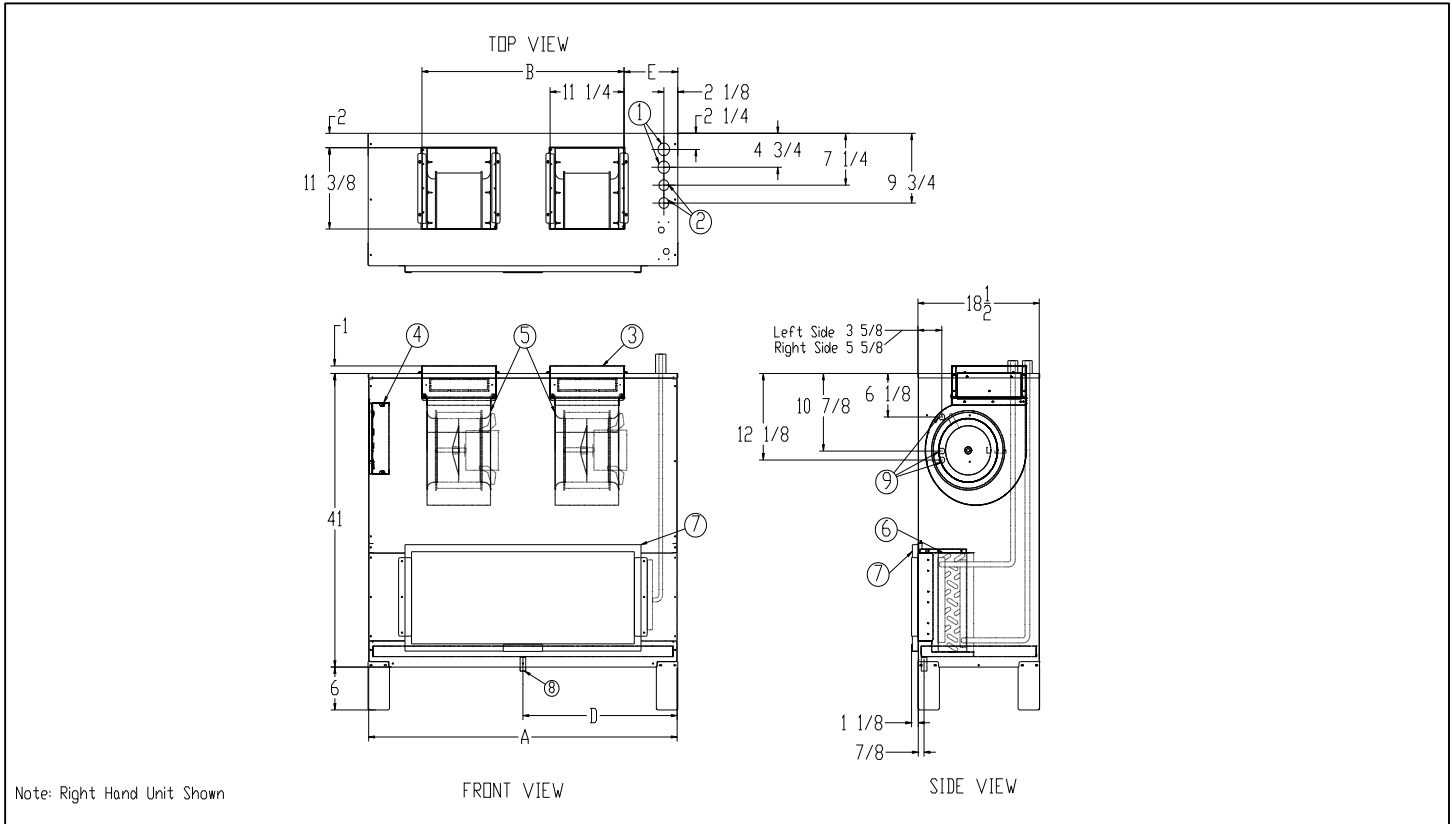


## VHC

### Fan Coil Unit

### Vertical High Output Concealed Cabinet



Model	Dimensions (inches)						Approx. Weight (lb)
	A	B	C	D	E	Filter	
VHC06	23	N/A	5/8	11 1/2	5 7/8	15x17x1	150
VHC08	28	N/A	5/8	14	8 3/8	15x20x1	170
VHC10	32	N/A	7/8	16	10 3/8	15x23x1	195
VHC12	37	N/A	7/8	18 1/2	12 7/8	15x28x1	200
VHC14	42	27 3/4	7/8	21	7 1/8	15x32x1	240
VHC16	47	31 3/4	7/8	23 1/2	8 1/8	15x36x1	260
VHC18	52	35 3/4	7/8	26	8 1/8	15x41x1	268
VHC20	56	39 3/4	7/8	28	8 1/8	15x45x1	280

1. Cold Water Coil Connections – 2/4 pipe supply and return O.D. = "C"
2. Hot Water Coil Connections – 4 pipe supply and return O.D. = "5/8"
3. Supply Duct Collar
4. Electrical Control Box
5. Motor/Blower(s) Assembly
6. Coil Assembly
7. Filter
8. Condensate Connection – 7/8" O.D.
9. Electrical Knockout Entries

## Accessories (Optional)

Check  if provided.

- Motor Quick Disconnect
- Thermostat \_\_\_\_\_
- Control Transformer & Fan Relays
- Aquastat Changeover Switch

- Washable Filter
- Unit Disconnect Switch
- Fuse

## Accessories (Optional)

Coil - 1/2" O.D. Copper Tube; 10 Fins/Inch Aluminum, Sine Wave

### 2-Pipe

- 3-Row (STD.)   
  4-Row (STD.)   
  5-Row   
  6-Row

### 4-Pipe (Cooling Rows/Heating Rows)

- 2/1-Row   
  3/1-Row   
  3/2-Row   
  4/1-Row   
  4/2-Row   
  5/1-Row

- Chilled Water Cooling                     
  Hot Water Heating  
 Glycol Cooling                                     
  Glycol Heating

### Motor(s) - 3 speed PSC

Standard  
115V/60Hz/1ph

Model	HP	Total Amps
VHC06	1/4	3.5
VHC08	1/4	3.5
VHC10	1/4	3.7
VHC12	1/3	4.0
VHC14	2 x 1/4	2 x 3.5
VHC16	2 x 1/4	2 x 3.5
VHC18	2 x 1/4	2 x 3.5
VHC20	2 x 1/3	2 x 4.0

### Optional:

- 208V/60Hz/1ph  
 230V/60Hz/1ph  
 277V/60Hz/1ph

### Features:

- Automatic Reset
- Thermal Overload Protection System
- Sleeve Bearings

### Electric Heat (Single Phase)

#### Heater Voltage

- 115V  
 208V  
 230V  
 277V

#### Electric Heater kW Primary or Supplementary

Size	Blowers	Electric Heater kW Primary or Supplementary			
		115 Volts	208 Volts	230 Volts	277 Volts
		Min-Max kW	Min-Max kW	Min-Max kW	Min-Max kW
06	1	1-3.5 kW	1-6 kW	1-6 kW	1-6 kW
08	1	1-3.5 kW	1-6 kW	1-7 kW	1-8 kW
10	1	1-3.5 kW	1-6 kW	1-7 kW	1-8.5 kW
12	1	1-3.5 kW	1-6 kW	1-7 kW	1-8.5 kW
14	2	1-4 kW	1-9 kW	1-10 kW	1-12 kW
16	2	1-4 kW	1-9 kW	1-10 kW	1-12 kW
18	2	1-4 kW	1-9 kW	1-10 kW	1-12 kW
20	2	1-4 kW	1-9 kW	1-10 kW	1-12 kW

Condensate Pan

- |  |  |
|--|--|
| <input type="checkbox"/> Galvanized (STD.)           | <input type="checkbox"/> Safety Overflow Float Switch* |
| <input type="checkbox"/> Mastic Coating              |  |
| <input type="checkbox"/> Stainless Steel Inner Layer |  |

Description: Single Layer of 16 gauge Galvanized Sheet Metal with Mastic Coating and One - Inch Internal Insulation between Pan and Cabinet Exterior.

\*24V, requires transformer and fan relay if not obtained with a 24V thermostat.

Valves and Valve Accessories

- |  |  |
|--|--|
| <input type="checkbox"/> Shut - Off Valve(s)             | <input type="checkbox"/> Strainer(s)                     |
| <input type="checkbox"/> Shut - Off Valve w/ Memory Stop | <input type="checkbox"/> Manual Flow Control Valve(s)    |
| <input type="checkbox"/> 2 - Way Motorized Valve         | <input type="checkbox"/> Automatic Flow Control Valve(s) |
| <input type="checkbox"/> 3 - Way Motorized Valve         | <input type="checkbox"/> Unions                          |
| <input type="checkbox"/> 2 - Way Modulating Valve        | <input type="checkbox"/> Pete's Plug(s)                  |

General Description

- This vertical discharge, floor-mounted, cased unit is designed for concealed installations associated with ducted air systems in public buildings, schools, hospitals and hotels.
- Exterior fabricated of 18 gauge galvanized steel with 1/2" matte-faced liner for maximum thermal and acoustical insulation, unpainted.
- Removable motor/blower assembly mounted on a deck which slides out for easy maintenance.
- Throwaway filter.
- Manual Air Vent.
- System charged with air to insure a leak free arrival at the job site.

This submittal is meant to demonstrate general dimensions of this product. The drawings are not meant to detail every aspect of the product. Drawings are not to scale. Titus reserves the right to make changes without written notice.



605 Shiloh Road • Plano, Texas 75074 • 972-212-4800